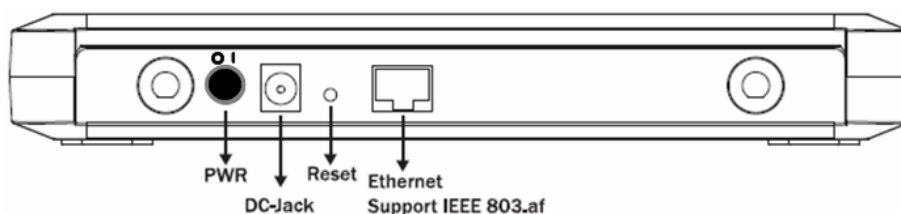


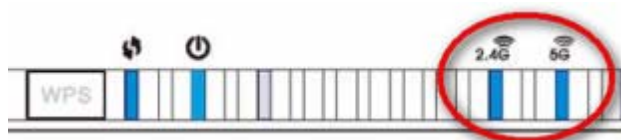
## ECB7510

### Power On

1. Please screw the two antennas provided **firmly** to the SMA connectors on the device.
2. ECB7510 supports both IEEE 802.3at **PoE** (Power over Ethernet) and regular power adapter. You should use either one as the power source. Please do not apply both at the same time.
3. Push down the power button (labeled **O I**) on the back panel to power on the device.

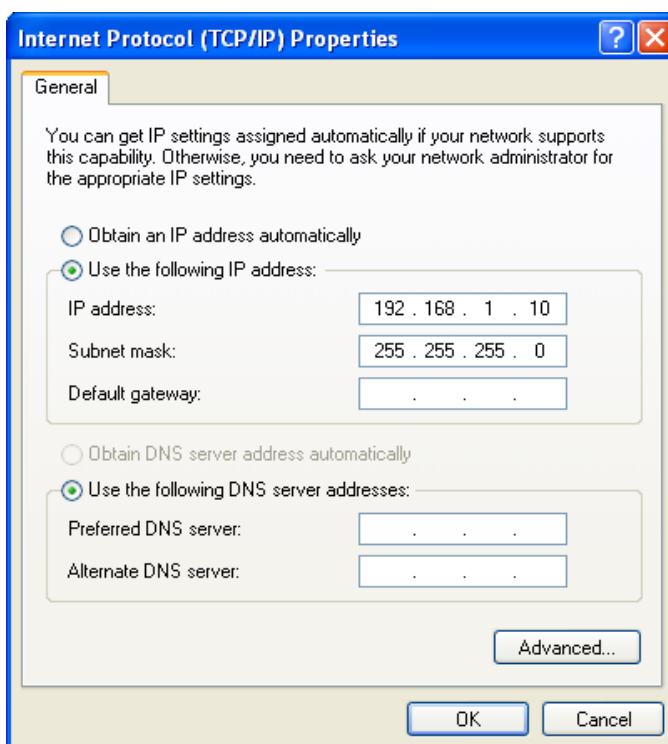


4. It takes about 20 seconds for the system to complete its process. The system is ready when WLAN 2.4GHz or 5GHz is **on** as shown on the right.

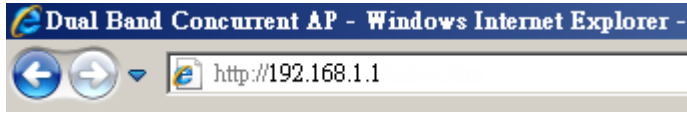


### Configure Setting

1. You can easily configure the device using a web browser. The default device IP address is **192.168.1.1**.
2. It is recommended to setup the device over Ethernet connection. You will need a computer with a free Ethernet port.
3. Configure the Ethernet network interface to IP address **192.168.1.10** with subnet mask **255.255.255.0** (you can use any other IP address as long as it is legal and under the same 192.168.1.x domain). Please leave default gateway and DNS blank.



- Open your web browser and enter <http://192.168.1.1> into address bar then press enter.



- Enter **admin** for **Username** and **Password** in the following login prompt.

### EnGenius

Username:

Password:

- You have successfully connected to the device administration page. You can now start configuring your device. Please refer to the user manual on the CD for more details.

EnGenius® | Dual Band Concurrent AP

Access Point Mode

- System
- Wireless
- Network
- Management
- Tools
- ▶ Logout

You can use the Status page to monitor the connection status for WLAN/LAN interfaces, firmware and hardware version numbers.

System	
System Time	2009/01/01 00:03:44
System Up Time	3 min 44 sec
Hardware Version	1.0.0
Kernel Version	1.0.2
Application Version	1.0.2

LAN Settings	
IP Address	192.168.1.1
Subnet Mask	255.255.255.0
MAC Address	00:02:6F:75:10:07

**Note:** ECB7510 is not a router and does not support DHCP server. It will not assign IP address to its wireless clients or LAN side computers.